

VOLVO

AIDE final workshop and exhibition

**Malin Persson, President
Volvo Technology**

2008-04-15

Road transport

- a major contributor to society

- Contribution to economic prosperity
- Social, regional and economic cohesion
- Sustainable development and growth



Major challenges for road transport

- Sustainability of Road Transport
- Mobility and efficiency
- Safety for all road users



Volvo Group Core Values

- Quality
- Safety
- Environment



Volvo Group Core Values

- Quality
- **Safety**
- Environment



Causes of accidents

Road environment



Driver related

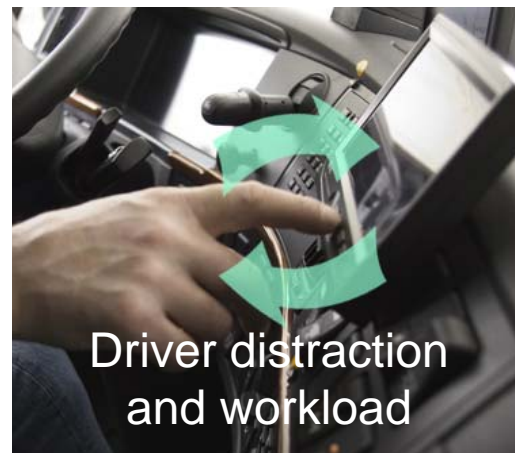
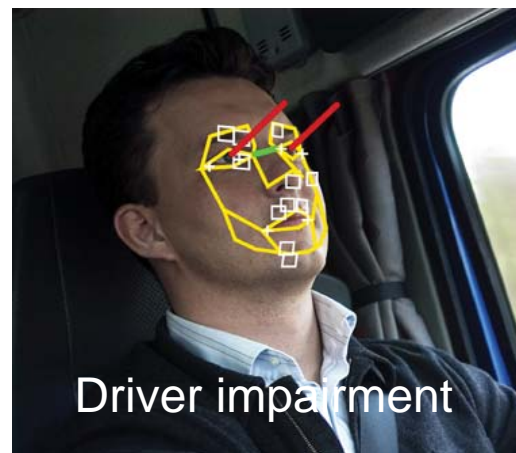


Vehicle related



One, or a combination, of these categories

Driver related focus areas for Volvo



Effects of AIDE for Volvo

- Driver environment competence strengthened further
- Technologies allowing safe functional growth
- Modular solutions decreasing development time and cost

- Strengthening the HMI network in Europe
- Harmonizing the European HMI agenda
- Raising public awareness of HMI issues in traffic safety

Result: safer and more efficient driver environment
= INCREASED TRAFFIC SAFETY



Finally

It has been a pleasure for Volvo to coordinate AIDE

- Project well in line with Volvo Group objectives
- Project developments provide important input to product development

A warm welcome to AIDE Final Workshop and Exhibition

- The conclusion of the AIDE project
- The start of new HMI research initiatives?
- Towards future automotive HMI!

